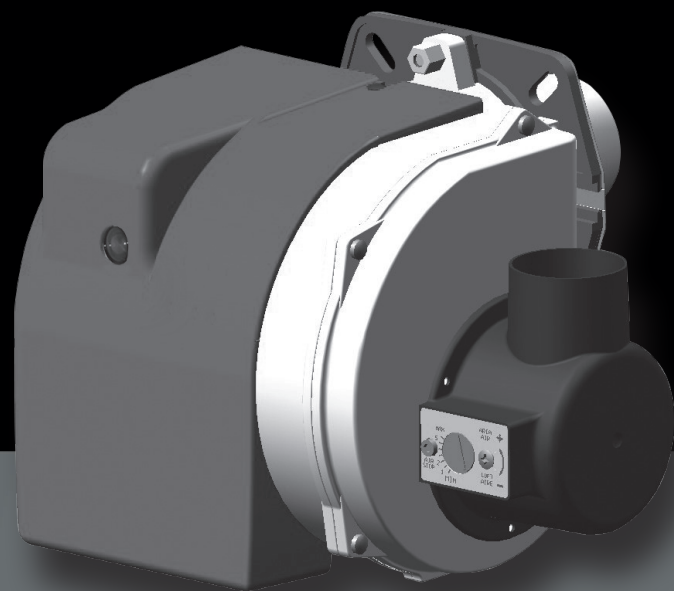


# Scheda Tecnica

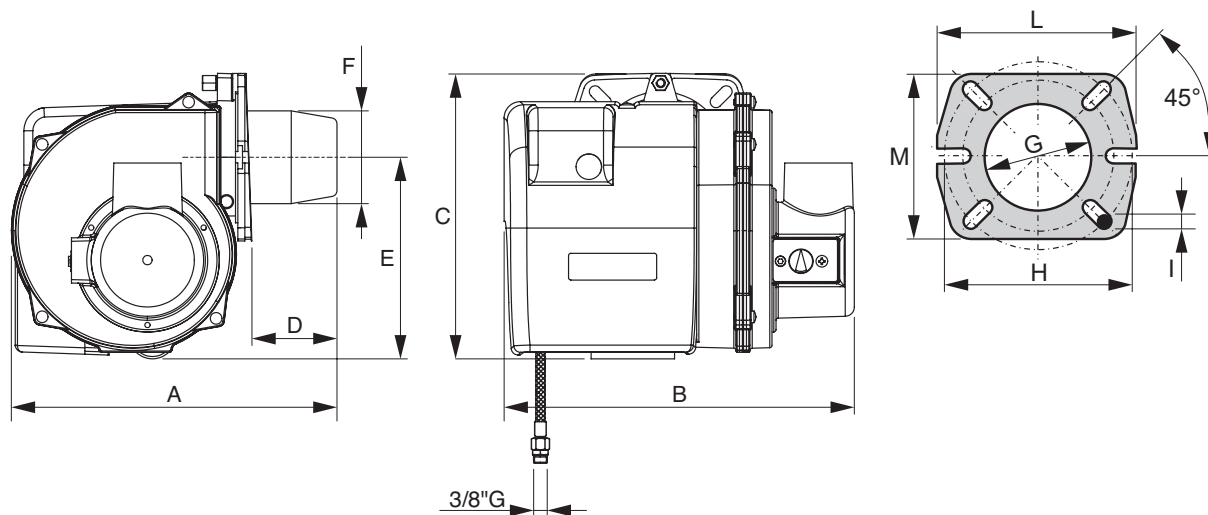


FOCUS PRO

Rev. del 16/07/2018

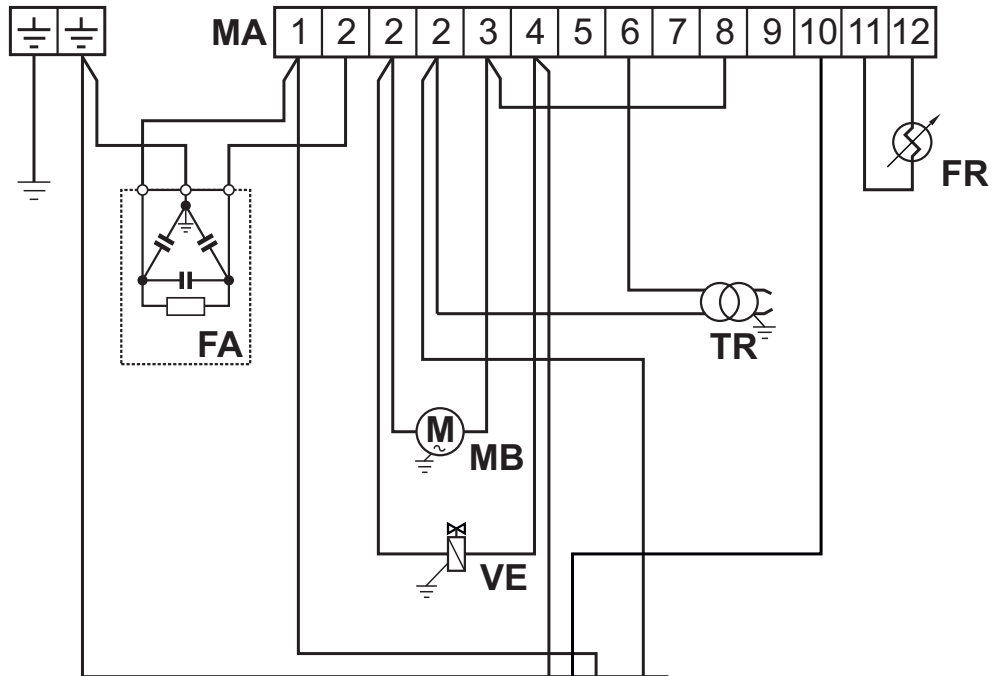
# Bruciatori di gasolio

## Dimensioni e attacchi



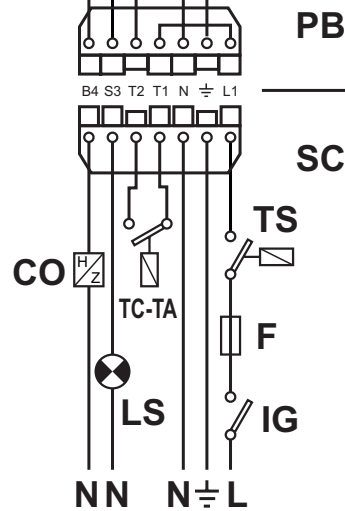
Modello	A	B	C	D	E	Ø F	Ø G	Ø H		I	L	M
								min	max			
<b>FOCUS PRO 3</b>	280	305	245	75	175	80	85	135	160	M8	170	144
<b>FOCUS PRO 3R</b>	280	305	245	75	175	80	85	135	160	M8	170	144
<b>FOCUS PRO 6</b>	280	305	245	75	175	80	85	135	160	M8	170	144
<b>FOCUS PRO 6R</b>	280	305	245	75	175	80	85	135	160	M8	170	144

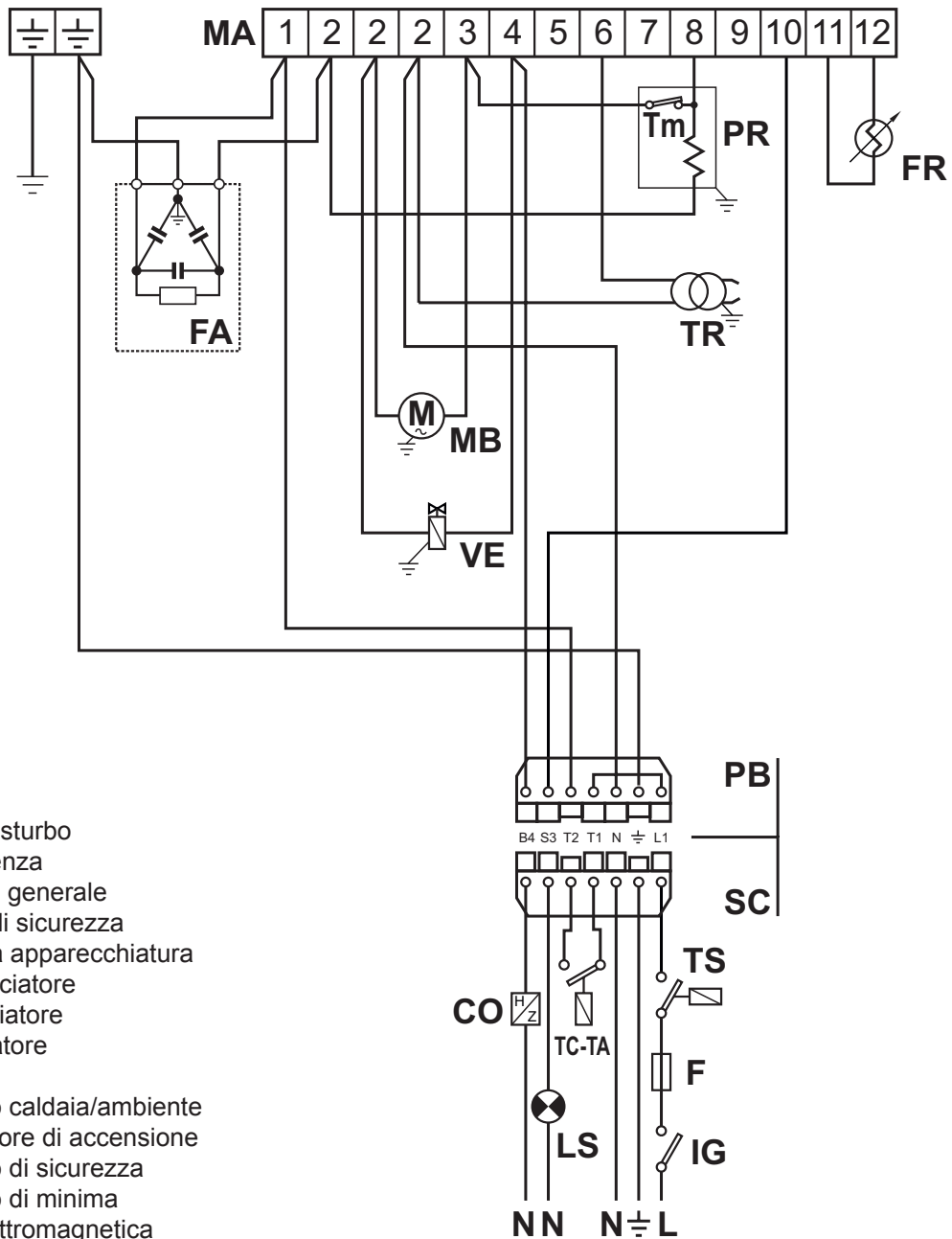
## Collegamenti elettrici FOCUS PRO 3 - FOCUS PRO 6



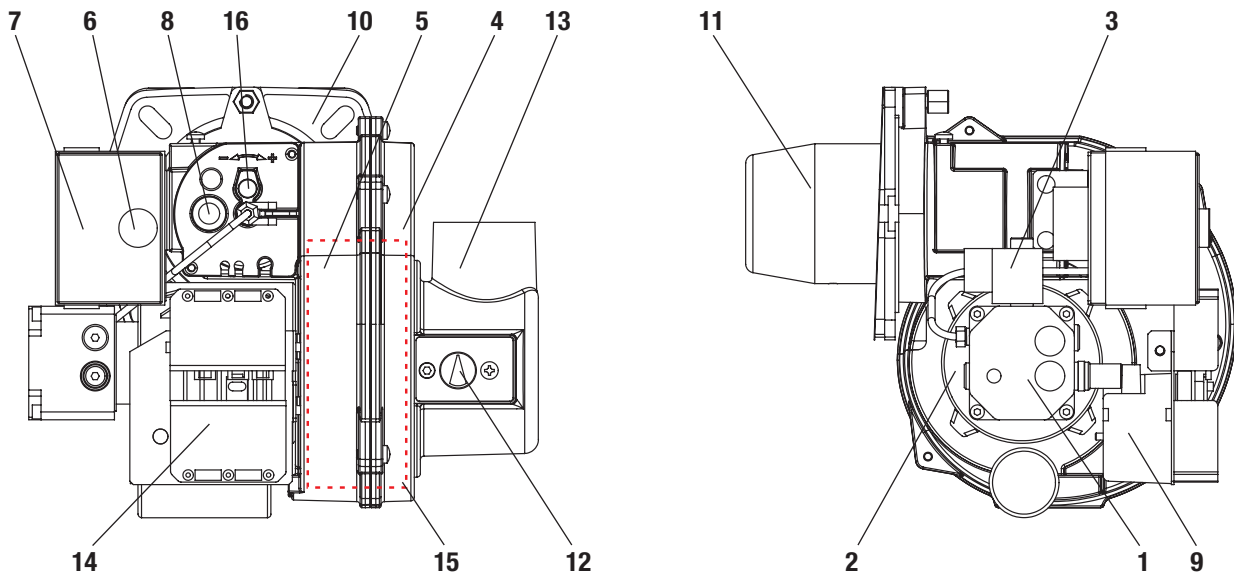
## Legenda

<b>CO</b>	Contaore
<b>F</b>	Fusibile
<b>FA</b>	Filtro antidisturbo
<b>FR</b>	Fotoresistenza
<b>IG</b>	Interruttore generale
<b>LS</b>	Lampada di sicurezza
<b>MA</b>	Morsettiera apparecchiatura
<b>MB</b>	Motore bruciatore
<b>PB</b>	Presa bruciatore
<b>SC</b>	Spina
<b>TA-TC</b>	Termostato caldaia/ambiente
<b>TR</b>	Trasformatore di accensione
<b>TS</b>	Termostato di sicurezza
<b>VE</b>	Valvola elettromagnetica



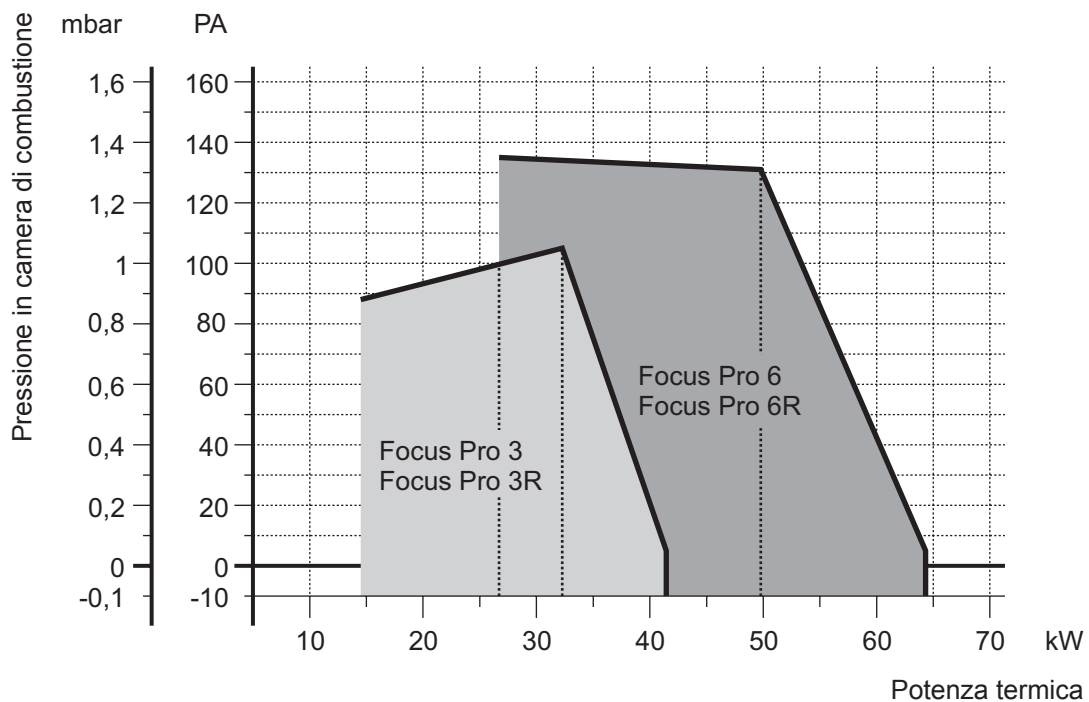
**Collegamenti elettrici FOCUS PRO 3R - FOCUS PRO 6R**


### Vista generale e componenti principali



- |                            |                               |                                     |
|----------------------------|-------------------------------|-------------------------------------|
| 1 Pompa gasolio            | 7 Apparecchiatura             | 13 Coperchio aspirazione aria       |
| 2 Motore                   | 8 Fotoresistenza              | 14 Spina allacciamento elettrico    |
| 3 Valvola elettromagnetica | 9 Trasformatore d'accensione  | 15 Ventola                          |
| 4 Semicorpo lato aria      | 10 Flangia attacco bruciatore | 16 Regolazione testa di combustione |
| 5 Semicorpo lato motore    | 11 Boccaglio                  |                                     |
| 6 Pulsante di sblocco      | 12 Regolazione aria           |                                     |

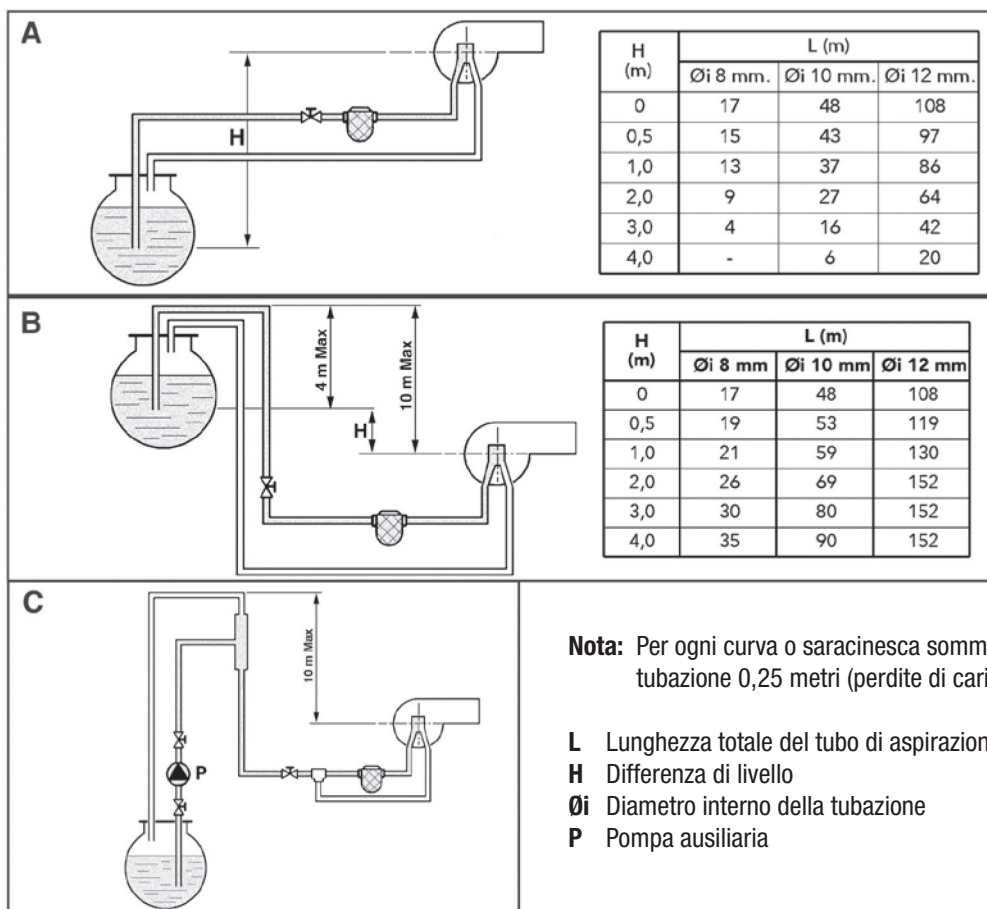
### Curve di lavoro



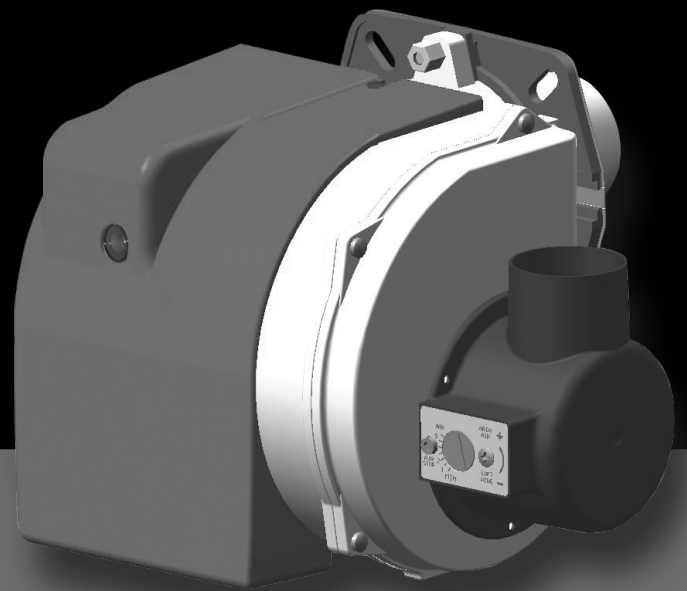
## Tabella dati tecnici

FOCUS PRO		3	3R	6	6R	
Potenza termica	min	14,5	14,5	26,2	26,2	kW
	max	32,2	32,2	64,3	64,3	kW
Portata	min	1,20	1,20	2,20	2,20	kg/h
	max	3,50	3,50	5,4	5,4	kg/h
Preriscaldatore		-	110	-	110	W
Funzionamento	Tutto / niente					
Combustibile	Gasolio					
Viscosità gasolio max a 20°C	1,5 °E - 6 CSt - 41 sec; R1					
Alimentazione elettrica	230/50 o 60 monofase					V/Hz
Taratura pompa		12	12	12	12	bar
Motore		100	100	100	100	W
Potenza elettrica assorbita max.		175	240	175	240	W
Condensatore		6,3	6,3	6,3	6,3	µF
Trasformatore di accensione (tensione/corrente secondario)		15 / 40	15 / 40	15 / 40	15 / 40	kV/mA
Grado di protezione elettrica		20	20	20	20	IP
Rumorosità *		61	61	61	61	dB(A)
Peso		10	10,1	10	10,1	kg

\* Pressione sonora misurata nel laboratorio combustione del costruttore, con bruciatore funzionante su caldaia di prova alla potenza massima.



# Data Sheet

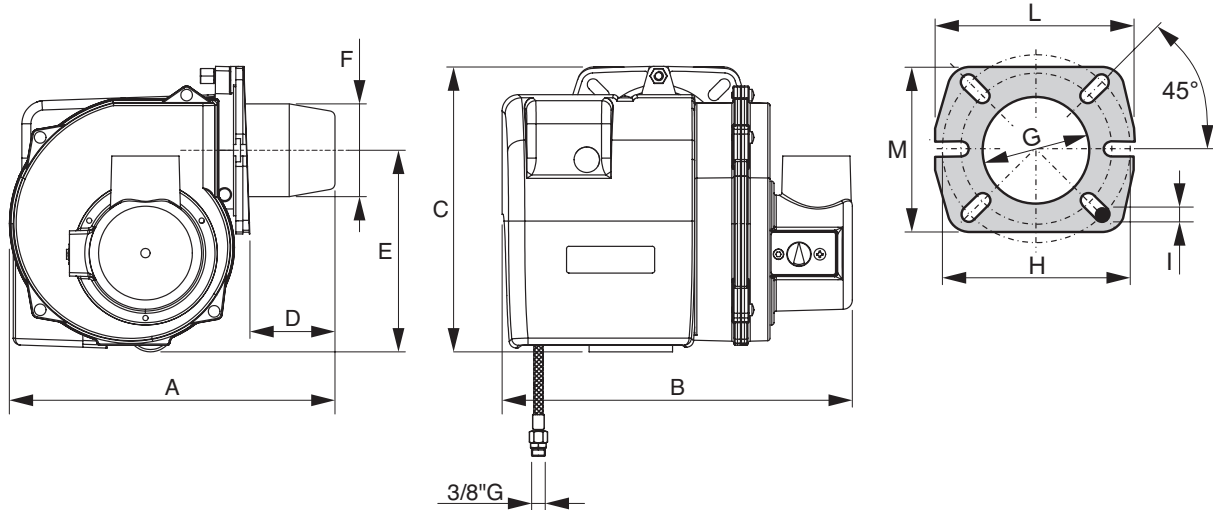


**FOCUS PRO**

Rev. del 16/07/2018

# Light oil burners

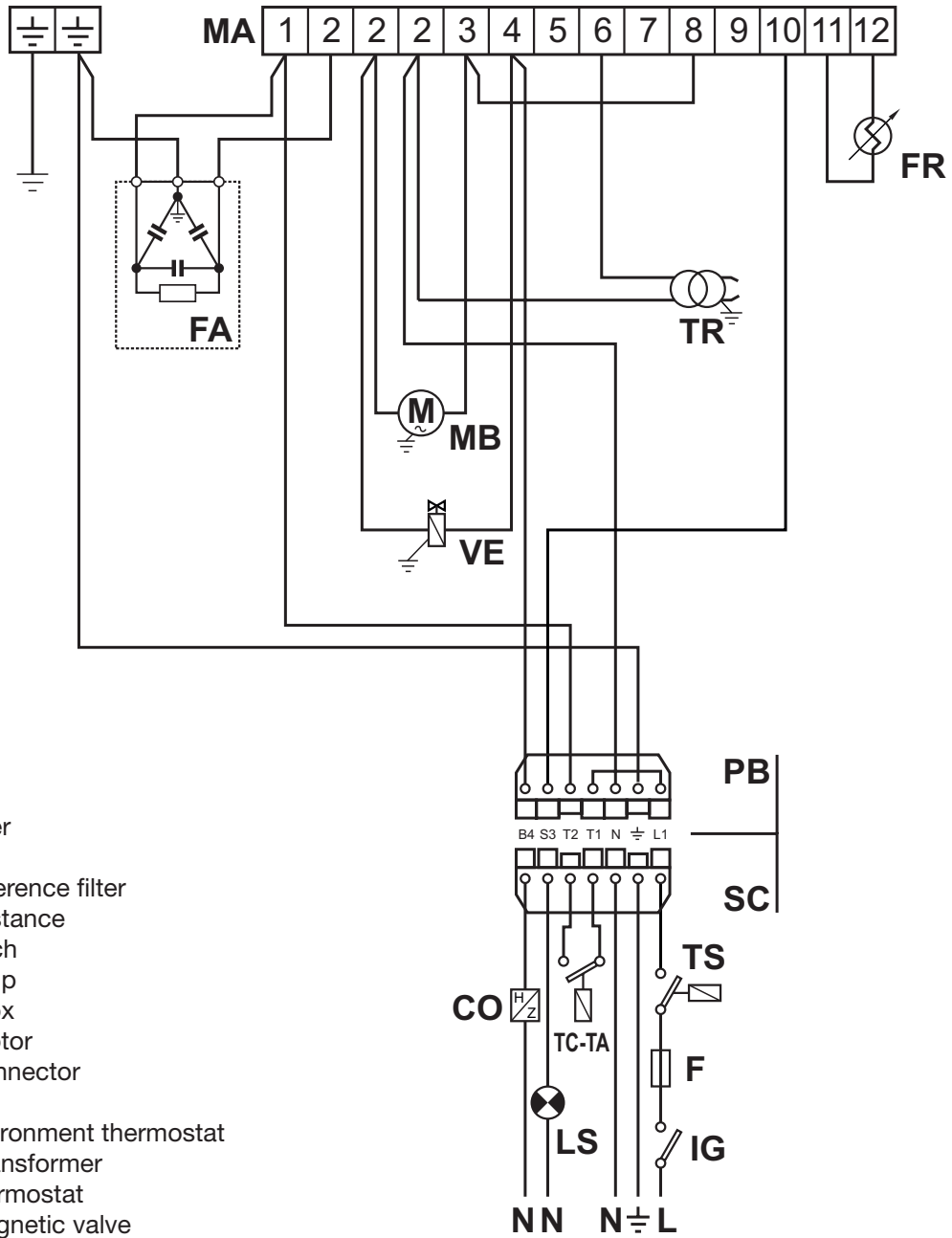
## Dimensions and connections



Model	A	B	C	D	E	Ø F	Ø G	Ø H		I	L	M
								min	max			
<b>FOCUS PRO 3</b>	280	305	245	75	175	80	85	135	160	M8	170	144
<b>FOCUS PRO 3R</b>	280	305	245	75	175	80	85	135	160	M8	170	144
<b>FOCUS PRO 6</b>	280	305	245	75	175	80	85	135	160	M8	170	144
<b>FOCUS PRO 6R</b>	280	305	245	75	175	80	85	135	160	M8	170	144



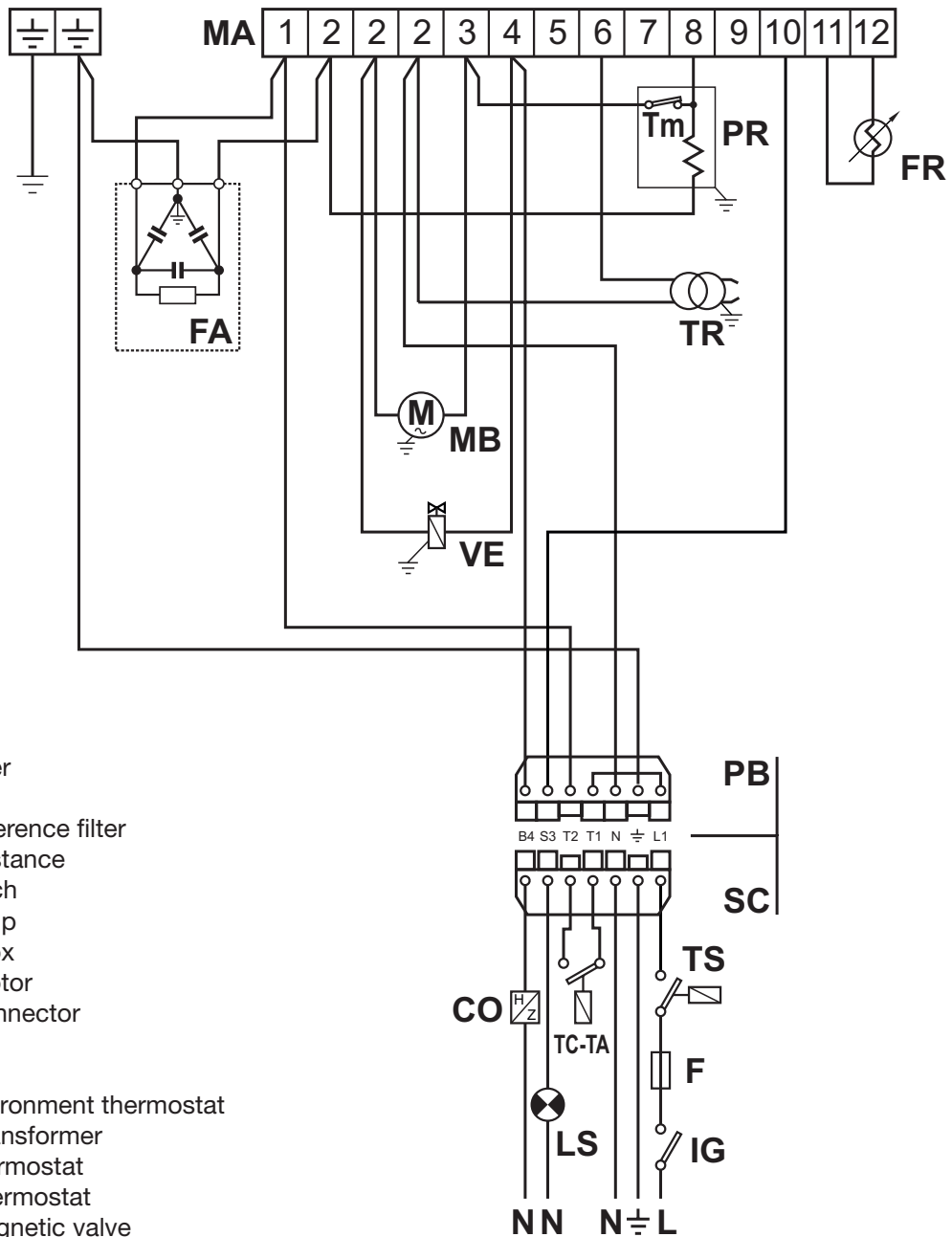
Electrical connections FOCUS PRO 3 - FOCUS PRO 6



Key

- CO Hour-meter
- F Fuse
- FA Anti-interference filter
- FR Photoresistance
- IG Main switch
- LS Safety lamp
- MA Control box
- MB Burner motor
- PB Burner connector
- SC Plug
- TA-TC Boiler environment thermostat
- TR Ignition transformer
- TS Safety thermostat
- VE Electromagnetic valve

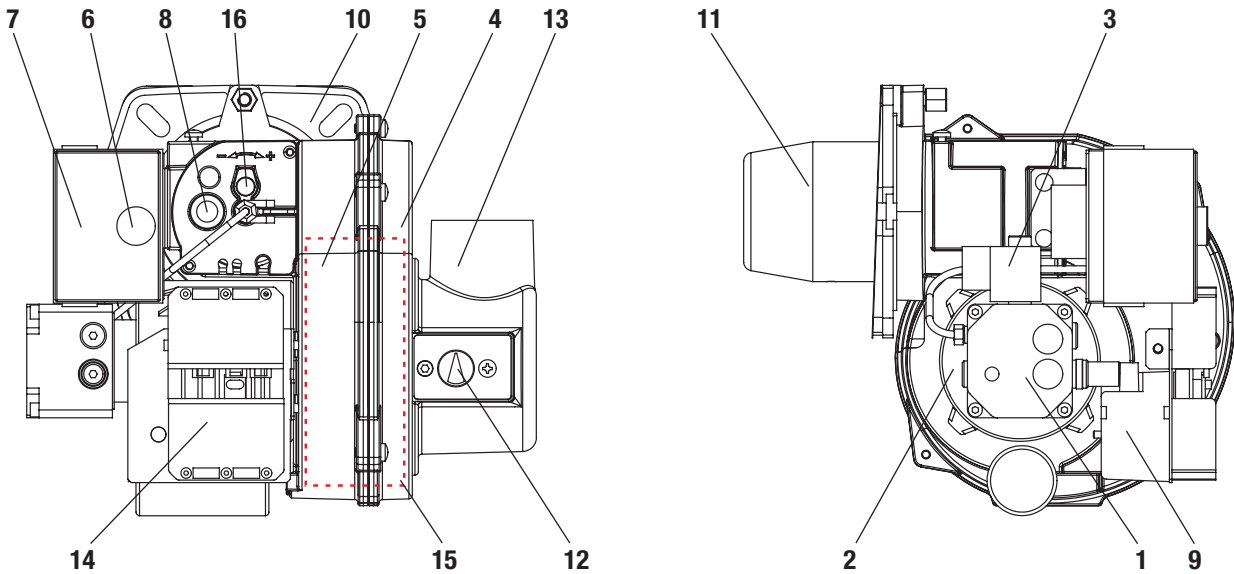
Electrical connections FOCUS PRO 3R - FOCUS PRO 6R



Key

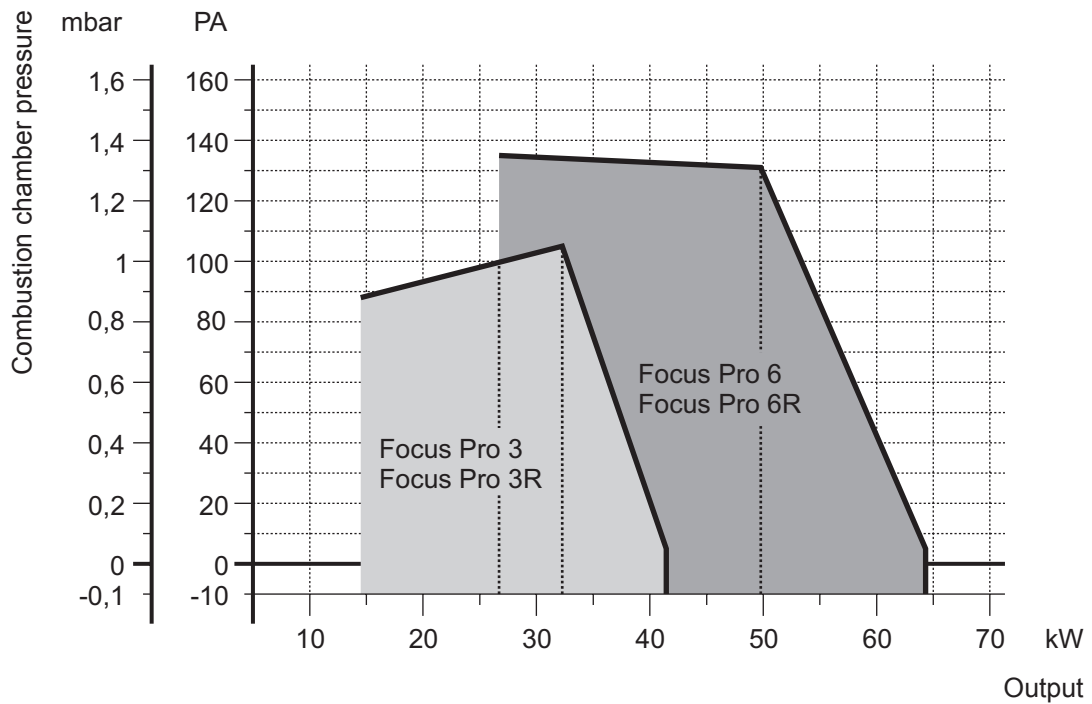
- CO** Hour-meter
- F** Fuse
- FA** Anti-interference filter
- FR** Photoresistance
- IG** Main switch
- LS** Safety lamp
- MA** Control box
- MB** Burner motor
- PB** Burner connector
- PR** Preheater
- SC** Plug
- TA-TC** Boiler environment thermostat
- TR** Ignition transformer
- TS** Safety thermostat
- Tm** Min. pr thermostat
- VE** Electromagnetic valve

General view and main components



- |                               |                             |                               |
|-------------------------------|-----------------------------|-------------------------------|
| 1 Oil pump                    | 6 Reset button              | 12 Air damper adjustment      |
| 2 Motor                       | 7 Appliance                 | 13 Air intake cover           |
| 3 Electromagnetic valve       | 8 Photo cell                | 14 Electrical connection plug |
| 4 Air side burner semi-body   | 9 Ignition transformer      | 15 Fan                        |
| 5 Motor side burner semi-body | 10 Burner attachment flange | 16 Combustion head adjustment |
|                               | 11 Draught tube             |                               |

Pressure curves



## Technical data table

FOCUS PRO		3	3R	6	6R	
Output	min	14,5	14,5	26,2	26,2	kW
	max	32,2	32,2	64,3	64,3	kW
Flow	min	1,20	1,20	2,20	2,20	kg/h
	max	3,50	3,50	5,4	5,4	kg/h
Preheater		-	110	-	110	W
Functioning		On / Off				
Fuel		Light oil				
Max Viscosity at 20°C		1,5 °E - 6 CSt - 41 sec; R1				
Electrical power supply		230/50 o 60 single-phase				V/Hz
Pump calibration		12	12	12	12	bar
Motor		100	100	100	100	W
Max. absorbed power		175	240	175	240	W
Condenser		6,3	6,3	6,3	6,3	µF
Trasformatore (voltage / secondary current)		15 / 40	15 / 40	15 / 40	15 / 40	kV/mA
Electric protection rating		20	20	20	20	IP
Noise level *		61	61	61	61	dB(A)
Weight		10	10,1	10	10,1	kg

\* Sound pressure measured in the manufacturer's combustion laboratory, with burner operating on a test boiler and at maximum output..

